



Integrating
Transport Infrastructure
with Living Landscapes
IENE



IENE - 5th International Conference on Ecology and Transportation - 30th August to 2nd September 2016, Lyon, France

IDRRIM :

Institut des Routes, des Rues et des Infrastructures pour la Mobilité

By Patrick Porru



Integrating
Transport Infrastructure
with Living Landscapes
IENE

IENE - 5th International Conference on Ecology and Transportation - 30th August to 2nd September 2016, Lyon, France

A Reference Partnership Institute for the community of public - private actors working for a shared interest :

« **Infrastructure and urban public spaces** »

An **original** and **unique** pattern all over the world

Place of **convergence** and **exchange** in order to establish a new basis of **sharing** standards and **tools** for all infrastructure's actors

- **Objectives** : Bring homogeneous answers to technical and strategical issues



1. The Institute

Mission

Federate and mobilize

Establish shared documents

Contribute to an increased proficiency

Promote the French excellence

Networking

Documents production

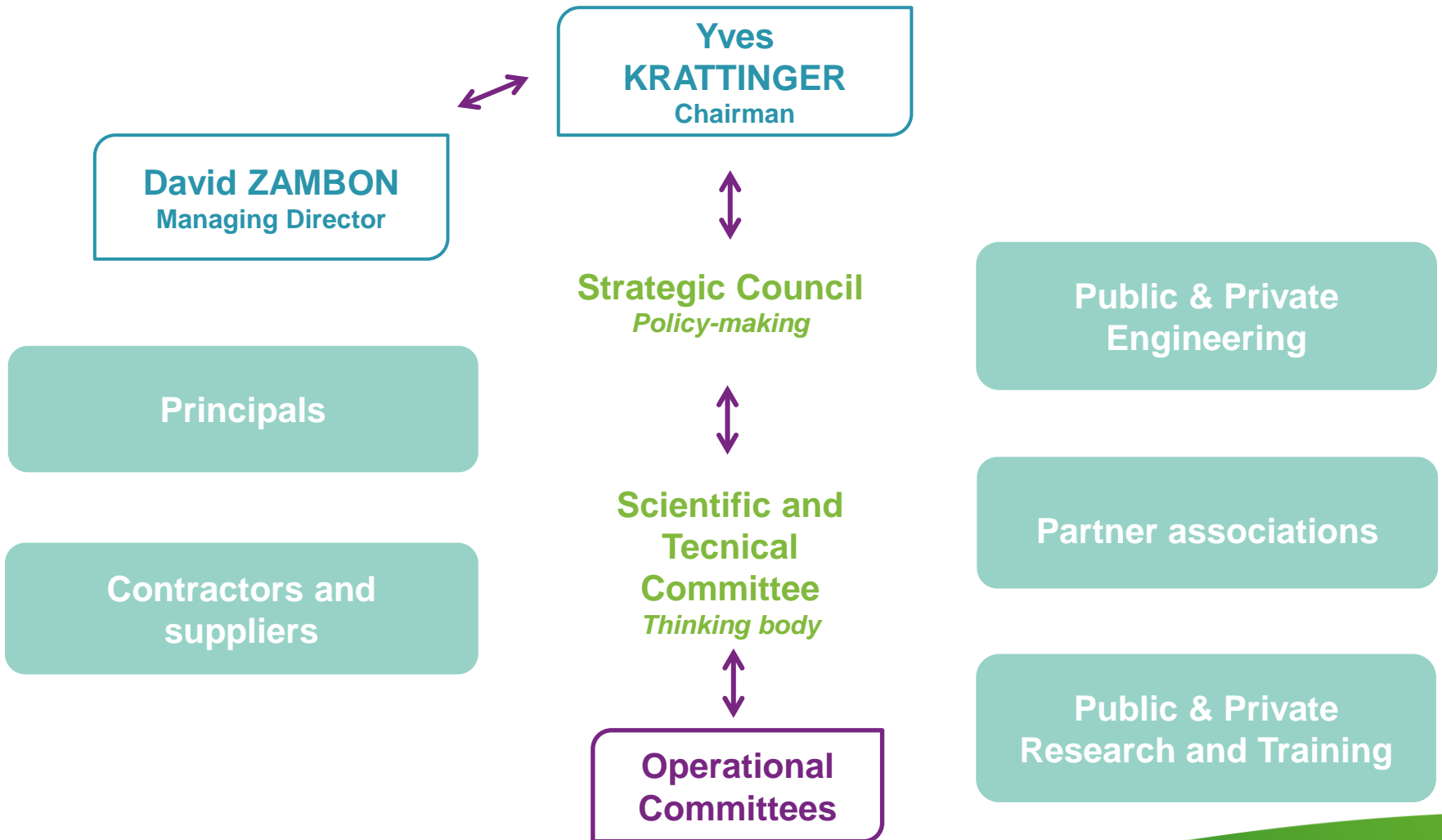
Innovating

Information sharing



1. The Institute

49 members distributed over 5 colleges





1. The Institute

The works of the Institute

A panel of volunteer experts.

Through 9 operational committees :

- Production of technical documents shared by all partners of the institute.
 - *Warm mix asphalt*
 - *Protection of natural areas on construction site*
- Approve of private and public laboratories and organize interlaboratory tests.
- Organization of seminars and events for the infrastructure's community.
 - => IMBP contest (Infrastructures for Mobility, Biodiversity and Landscapes)**



What is the IMBP contest ?

- Created in 2010 by the Institute.
- 35 awarded projects
- Different origins (ministerial service, department & local collectivity, , engineering firm, private company)

Objectives : To valorize the best projects in preserving, restoring and promoting the ecosystems, biodiversity and landscape



Awards of 2015

18 projects received - 7 awarded (4 departmental, 1 city, 2 engineering firms)

Category « ECOLOGIC CONTINUITY »

«Restoration of the ecologic permeability of a dual carriageway » - Department of Ain

Category « ECOLOGIC ENGINEERING »

« RD – 643 – South bypass of Cambrai; Ecology & Biodiversity; An innovating and volunteering approach » - Department of Nord

Category « BIODIVERSITY & LANDSCAPE »

« A roadside tree policy, respect for biodiversity and landscape » - Department of Hérault

Category « COMMUNICATION »

« Reorganization of the Austerlitz place, an archipel of nature in the city » - Eurometropole of Strasbourg

Category« INGENIOUS INITIATIVE »

« Detour road of Troissereux – Ecologic continuity in construction site : temporary device for bats guidance » - Egis Structures & Environment

Category« PROMISING PROJECT »

« Area landscaping of the Stade Océane in the Le Havre agglomeration » - Richez Associés paysage

Special price

« Bypass of Lons le Saunier » - Department of Jura



2.1. A roadside tree policy, respectful of biodiversity and landscape

Department of Hérault : 5 000 km of road & 49 000 trees

Trees became an increasing factor of accident due to the transformation of road traffic

BUT

Are still precious ecosystem for many species, especially birds

Issues

- 1) Landscape
- 2) Biodiversity
- 3) Road safety



2.1. A roadside tree policy, respectful of biodiversity and landscape

Landscape & Road safety

Technical management of trees : « half designed shape »

- Assure the road safety by avoiding deadwood offcuts
- Without changing the form or the volume of the trees
 - => In the benefit of the landscape
- Pluridisciplinary team included landscaper

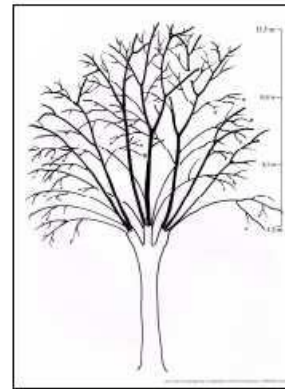
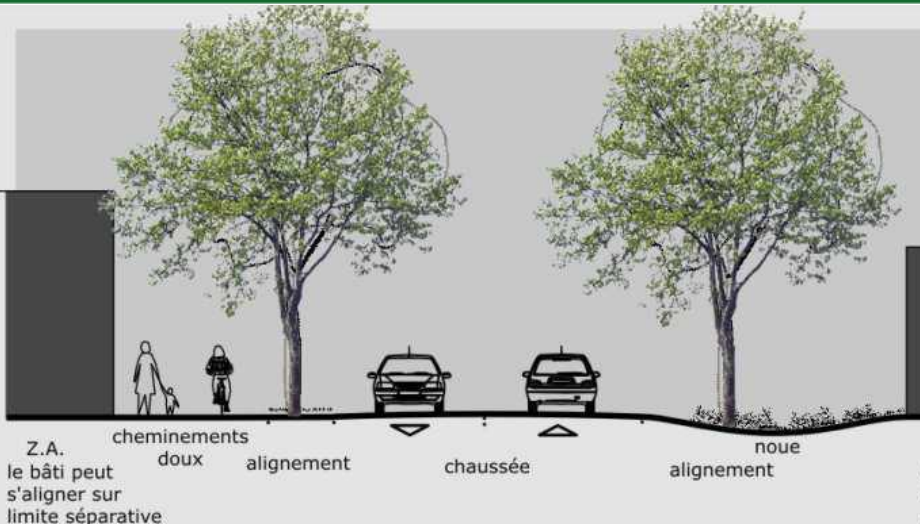
Trees and security

- Tree felling according to a decision flowchart including an environmental and patrimonial diagnostic
- Installation of innovating guardrails

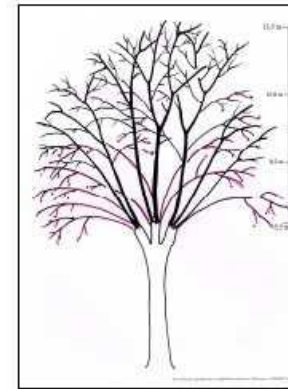


2.1. A roadside tree policy, respectful of biodiversity and landscape

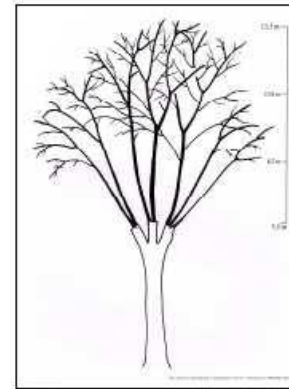
IENE - 5th IENE International Conference on Ecology and Transportation - 30th August to 2nd September 2016 - Lyon - France



État initial

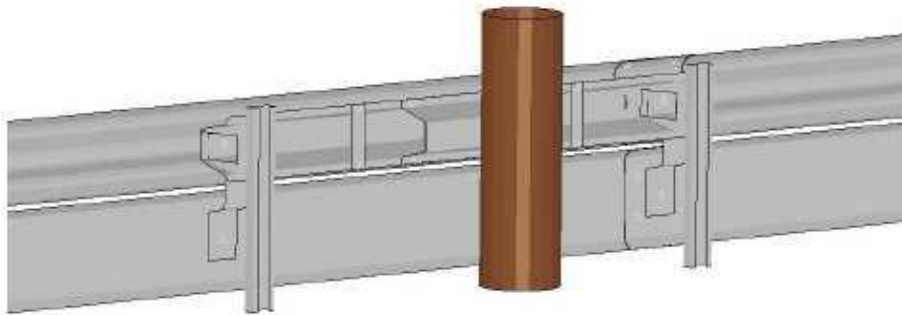


Maintien des formes semi Libres

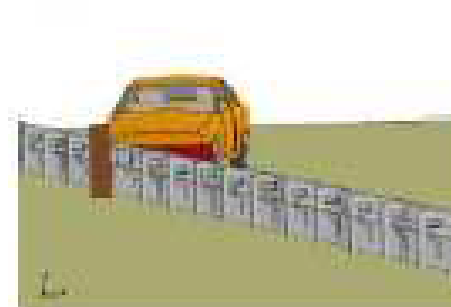


Intervention finie

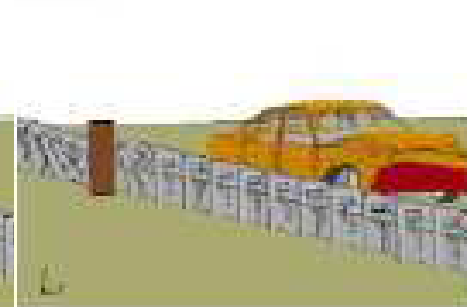
Landscape & Road safety



Barrière de sécurité standard



Barrière de sécurité avec poteau central





2.1. A roadside tree policy, respectful of biodiversity and landscape

Biodiversity

Trees and fauna

Important part of the ecosystem

Offering a place to live and reproduce for many species of birds & bats

- Expertise of the presence of species before intervention
- Setting a planning by preferential species

Canker stain threat

Illness provoked by a mushroom from North America

Kill the tree in 2 – 5 years

Proposal demarch :

- Automatically clean up cutting tools to avoid spread (registered in the contract)
- Communication of local players on this threat



2.1. A roadside tree policy, respectful of biodiversity and landscape



Expertise of the fauna on a tree and planning of intervention

- Formation
- Entretien du tronc
- Entretien des gabarits
- Bois mort (*Massaria*)
- Maintien des formes semi-libres
- Eclaircie de couronne
- Entretien des formes architecturées
- Conversion-réduction
- Conversion-Sélection
- Abattage
- Essouchage

	janv	fév	mar	avr	mai	juin	juil	août	sept	oct	nov	déc
Formation												
Entretien du tronc												
Entretien des gabarits												
Bois mort (<i>Massaria</i>)												
Maintien des formes semi-libres												
Eclaircie de couronne												
Entretien des formes architecturées												
Conversion-réduction												
Conversion-Sélection												
Abattage												
Essouchage												

- Période favorable
- Période tolérée
- Période interdite





2.1. A roadside tree policy, respectful of biodiversity and landscape

IENE - 5th IENE International Conference on E



Canker stain threat



2.1. Detour road of Troissereux – Ecologic continuity during construction : temporary device for bats guidance

IENE - 5th IENE

Presentation at the IENE
Conference the 1st September
at 10h30





2.2. 2014 Award

Awarded in 2014

23 projets received – 6 awarded (4 departments, 2 private companies)

Category « ECOLOGIC CONTINUITY »

« Sensible management for road areas & none herbicide in Dordogne » - Department of Dordogne

Category« ECOLOGIC ENGINEERING »

« Construction of a fish pass at the bridge of Vidourle » - SNCF- Regional Management of Languedoc-Roussillon,

Category « BIODIVERSITY & LANDSCAPE »

« Exported mowing of the roadside in Mayenne » - Department of Mayenne.

Category « COMMUNICATION »

« Pedagogy in service of the environment » - Department of Hérault,

Category« INGENIOUS INITIATIVE »

« Filtration modules MODUL'AP : Stormwater process on the construction site » - La Forézienne

Special price

« Eco-route demarch : a departmental action for a sustainable mobility » - Department of Bas-Rhin



2.2. « Eco-route » demarch : a departmental action for a sustainable mobility

Issue

Conciliate the needs of road improvement and sustainable development

Objectives

- 1) Transpose sustainable development into concrete actions
- 2) Generalize exemplary actions already engaged for sustainable development during constructions or reorganization projects :

Results

- 36 actions ended
- Reorganisation of road projects governance
 - Early phases
 - Reporting after construction



2.2. « Eco-route » demarch : a departmental action for a sustainable mobility

IENE - 5th IENE International Conference on Ecology and Transportation - 30th August to 2nd September 2016 - Lyon - France

Actions of communication

LE CONSEIL GÉNÉRAL DU BAS-RHIN
AU DE VOS VIES

- préservier **La FAUNE ET LA FLORE**
- renforcer **La CONCERTATION** avec l'ensemble des acteurs
- réduire **La CONSOMMATION D'ESPACE**
- expérimenter **DES TECHNIQUES ET MATÉRIAUX INNOVANTS**
- repositionner la route comme un élément utile à **TOUS LES MODES DE TRANSPORT**
- favoriser **LES ASPECTS SOCIAUX ET SOCIO-ÉCONOMIQUES** des territoires
- protéger **LES RESSOURCES PRIMAIRES**
- veiller à l'insertion des routes dans **Le PAYSAGE**
- veiller à **La SANTÉ** et à **La SECURITE**

GUIDE
« L'ÉCO-ROUTE : UNE ACTION DÉPARTEMENTALE, POUR UNE MOBILITÉ DURABLE »

Approuvé en séance plénière du 25 octobre 2010

CONSEIL GÉNÉRAL BAS-RHIN
www.bas-rhin.fr

For the technicians and institutionnal actors

BAS-RHIN :
UNE NOUVELLE ÉCO-ROUTE !

Le **CONTOURNEMENT ROUTIER D'OBERSCHAEFFOLSHEIM-WOLFISHEIM (RD45)** sous le signe du développement durable, dans le cadre de notre démarche **Eco-Route**.

Une route réalisée en prenant en compte la concertation avec l'ensemble des acteurs, le développement humain et économique ainsi que la protection de l'environnement

- **1 600 heures de travail réservées** aux personnes éloignées de l'emploi
- **10 bassins** de décantation et d'infiltration innovants conçus en collaboration avec des experts scientifiques et techniques
- **5 km de chemins agricoles**
- **Des passages pour la petite faune...**

+ D'INFOS SUR **CONSEIL GÉNÉRAL BAS-RHIN**
www.bas-rhin.fr

For the inhabitants





2. Prix IMBP

AND FOR 2016 ?

Contest launching 6 June 2016

Applications are open until 23 September 2016

7 categories

- Including urban and rural landscape (remarkable achievements of projects and structures)

Awards ceremony 8 December jointly with the ITTECOP price



3. Why compete...

Projects promotion within IDRRIM's community

- Via our newsletter (+ 4000 registered)
- Via our 49 institutional members

Promotion by our press partners

Revue générale des routes et de l'aménagement (RGRA)

Le Moniteur

Le Club Technique de la Gazette des Communes-Techni.Cités

Terre Sauvage

l'Ingénierie Territoriale

Infrastructures & Mobilité



Integrating
Transport Infrastructure
with Living Landscapes
IENE

IENE - 5th International Conference on Ecology and Transportation - 30th August to 2nd September 2016, Lyon, France

Thank you for your attention

For further information :

Visit our website on www.idrrim.com

or

Contact us at idrrim@idrrim.com